

HWHG
HONGWANG HOLDING GROUP



📍 No.46 Tianhong Rd, Foshan New Town, Guangdong, China

☎ 400-689-0089

🔍 www.cnhwjt.com

PRODUCT CATALOG

DREAMS FOR ALL



Devote to green intelligent manufacturing
continue to create value for customers

Reliable | Pragmatic | Open-minded | Innovative

CONTENT

01 About Hongwang

- Company Profile 01
- Development 03
- Honor & Qualification 05
- Core Products 06
- Manufacturing Bases 07

02 Technology & Innovation

- Scientific Prowess 18
- Production Facilities 19

03 Products

01 Stainless Steel

- Coil 29
- Sheet 33
- Colored Coil 37
- Colored Sheet 41
- Packaging & Delivery 47
- Certification & Qualification 49
- Product Application 51

02 Electrical Steel

- Grain Oriented Electrical Steel 60
- Non-Oriented Electrical Steel 60
- Standard Values for Magnetic Properties 61
- Product Application 70

03 Motor

- Shaded Pole Motor 73
- Micro DC Motor 74
- Permanent Magnet Synchronous Motor 75
- Product Application 75

04 Sales Network

HONGWANG PROFILE

Hongwang Holding Group is an enterprise specializes in the production of cold rolled stainless steel, electrical steel, coil and sheet finishing products. The group holds the following subsidiaries:

Zhaoqing Hongwang Metal Industrial Co., Ltd.
Fujian Hongwang Industrial Co., Ltd.
Shandong Hongwang Industrial Co., Ltd.
Yangjiang Hongwang Industrial Co., Ltd.
Hunan Hongwang New Material Technology Co., Ltd.
Sichuan Hongwang Stainless Steel Co., Ltd.
Henan Hongwang Metal Materials Co., Ltd.
Zhaoqing Hongwang Electrical Machinery Co., Ltd.
Foshan Hongwang Stainless Steel Co., Ltd.
Wuxi Hongwang Stainless Steel Co., Ltd.
Hongwang Technology Service Co., Ltd.

Hongwang Holding Group is ranked 435th in the list of the 2022 China Top 500 Enterprises; 219th in the Top 500 Manufacturing Enterprises; 205th in the Top 500 Private Enterprises; 127th in the Top 500 Private Manufacturing Enterprises.

The Hongwang group is entitled as the Leading Enterprises in the Stainless Steel Industry of China and branded with the title of China Famous Trademark. Relevant subsidiaries are entitled as National High-tech Enterprises. The ceaseless commitment to improve product quality wins the company the honor of Quality Trustworthy Unit.

Hongwang has nearly 3000 professional employees and is equipped with industry-leading stainless steel and electrical steel production equipment. The company also holds multiple patents of self-developed stainless steel finishing equipment such as whole coil finishing, sandblasting, 8K, Ti-black, AFP, PVD coating and etc. Our core products consist of 200, 300, and 400 series stainless steel coils and sheets, colored stainless steel coils and sheets, common grain oriented (CGO), high permeability grain oriented (HiB) and all grades of non-grain oriented electrical steel coils. Hongwang' products are widely used in kitchen utensils, medical equipment, household appliances, automotive components, building decoration, electrical machinery and other fields. With excellent product quality, good reputation, and innovative marketing concepts, Hongwang has taken its place as one of the leading cold rolled steel manufacturers and gained its recognition from customers.

The group established a strategic partnership with renowned steel enterprises to achieve effective integration of production-supply-marketing resources. We continue to improve production efficiency, enhances cost control and achieve value growth by developing products that meet customer needs. Besides committing to the standard of equipment and high efficiency, Hongwang strives to optimize management methods, which will take the company one step closer to the top metal enterprise for years to come.

Hongwang adheres to the mission of “devote to green intelligent manufacturing, continue to create value for customers”, the vision of “dreams for all”, and promotes the core value of “reliable, pragmatic, open-minded, innovative” and the spirit of “innovation, devotion, live earnestly, work happily”. We have a trustworthy and highly efficient management team with professional personnel, providing the necessary strength to satisfy customers with excellent products and quality service.



DEVELOPMENT

2005

Hongwang established the first private wide-plate cold rolled factory in China.

2008

03 The first phase of Zhaoqing Hongwang Metal Industrial Co.,Ltd, put into production.

2010

08 Guangdong Hongwang Investment Group Co., Ltd. was set up to start collectivized operation management.

2011

03 Sichuan Hongwang Stainless Steel Co., Ltd. put into production. The products gained market leadership in Western China.

2012

07 Henan Hongwang Metal Material Co., Ltd. put into production.

2014

01 The 1450mm five-stand tandem mill with continuous annealing and pickling line in Zhaoqing Hongwang put into operation successfully.

2015

09 The first phase of Fujian Hongwang put into production. 1450mm three-stand tandem mill with continuous annealing and pickling line. Annual output: 700,000 tons

2017

10 Shandong Hongwang began trial production. 1450mm hot annealing and pickling line with inline one-stand tandem mill; annual output: 600,000 tons. 1450mm five-stand tandem mill with continuous annealing and pickling line; annual output: 600,000 tons.

12 The second phase of Fujian Hongwang put into production. 1700mm five-stand tandem mill with continuous cold annealing and pickling line. Annual output: 600,000 tons

2019

06 The project of color-coated coil put into trial production in Zhaoqing Hongwang.
10 The first phase of Yangjiang Hongwang put into trial production. 1450mm hot and cold annealing and pickling line with inline four-stand tandem mill. Annual output: 700,000 tons.

2020

07 Doctoral workstation of Guangdong Province established in Zhaoqing Hongwang.
08 The 1450mm 20-high rolling mill and bright annealing line put into trial production in Zhaoqing Hongwang.
09 Hongwang Group is ranked 485th in the list of the 2020 China Top 500 Enterprises; 231st in the Top 500 Manufacturing Enterprises
12 Shandong Hongwang began trial production of surface finishing coil. Annual output: 150,000 tons.

2021

08 The second phase of Yangjiang Hongwang put into trial production. Project of 1450 hot and cold annealing and pickling line with inline four-stand tandem mills; annual output: 500,000 tons. Project of cold-rolled stainless-steel sheet; annual output: 300,000 tons. The company name changed from “Hongwang Investment Group” to “Hongwang Holding Group”.
09 Hongwang Group is ranked 451st in the list of the 2021 China Top 500 Enterprises; 220th in the Top 500 Manufacturing Enterprises.
11 Zhaoqing Hongwang’s 1st non-oriented electrical steel production line was officially put into production. Signifies Hongwang Group enter the electrical steel industry.
12 Hunan Hongwang construction project initiated. Annual output of oriented and non-oriented Electrical Steel: 960,000 tons.

2022

03 The construction of Hongwang headquarters building officially initiated.
04 The expansion project of cold rolled stainless steel in Fujian Hongwang initiated. Annual output: 1,300,000 tons.
09 Hongwang Group is ranked 435th in the list of the 2022 China Top 500 Enterprises; 219th in the list of the Top 500 Manufacturing Enterprises.

To be continued

HONOR & QUALIFICATION

China Famous Trademark

National High-Tech Enterprise

ISO14001 : 2015 Environmental Management System Certification

ISO9001 : 2015 Quality Management System Certification

Ranked **435**th in the list of the 2022 China Top 500 Enterprises

Ranked **219**th in the list of the Top 500 Manufacturing Enterprises

Ranked **205**th in the list of the 2022 China Top 500 Private Enterprises

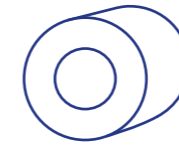
Ranked **127**th in the list of the Top 500 Private Manufacturing Enterprises

542 National Patents, includes: **58** invention patents

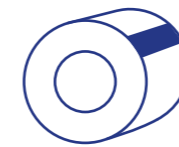
483 utility patents, and **1** design patent



PRODUCTS



Cold Rolled Stainless Steel Coil



Colored Stainless Steel Coil



Colored Stainless Steel Sheet



Functional Stainless Steel



Electrical Steel Coil



Motors

MANUFACTURING BASES

HWHG



ZHAOQING HONGWANG

In January 2014, the first domestically operated five-stand tandem mill with continuous annealing and pickling line put into operation in Zhaoqing Hongwang. The production line adopted an advanced 18-high mill and intelligent control technology. Successfully building and operating the five-stand tandem mill changed the phase of the Chinese cold rolled steel industry from single rolling to continuous rolling.

In June 2019, the company developed the whole coil finishing technology of color-coating and sandblasting, such as brushed finish, 8K, Ti-Black, Ti-Gold, AFP, PVD, and single sheet PVD intelligent continuous coating. Hongwang has achieved a large-scale production of color-coated stainless steel and improved the color stability and quality control. Provide our customers customized services from cold rolled coil to surface finishing products.

In August 2020, the 1450mm 20-high rolling mill and bright annealing line put into trial production.



FUJIAN HONGWANG

In 2014, the 1450mm three-stand tandem mill and the 20-high rolling mill with continuous annealing and pickling lines were put into production. The 1450mm three-stand tandem mill is capable of directly processing the incoming hot-rolled coil with the integrated production of rolling, annealing and pickling, making it a technical breakthrough in stainless steel industry.

In 2018, the 1700mm five-stand tandem mill with continuous annealing and pickling line was put into production. Hongwang became the first private enterprise in China that produces 1700mm cold rolled product, capable of covering all series of cold rolled stainless steel products.

In June 2022, the project of expansion is established in Fujian Hongwang. The new production lines are powered by end-to-end fully automatic production system and set with an addition annual output of 1.3 million tons. Relying on the raw materials and market competitive advantages of Tsingtuogroup, the company plans to further enrich product categories and extend the industrial chain.



SHANDONG HONGWANG

In 2016, the first phase was put into operation with the 850mm six-stand tandem mill with continuous cold annealing and pickling line.

In 2017, the second phase was put into operation with 1450mm hot annealing and pickling line with an inline one-stand tandem mill, and five-stand tandem mill with continuous cold annealing and pickling line.

In 2020, 18-high mills, 850mm bright annealing, whole coil surface finishing facilities put into operation. This allows us to deliver high quality products such as brushed, 8K, Ti-Black, Ti-Gold, AFP, PVD color-coated, to satisfy customer needs.



YANGJIANG HONGWANG

In October 2019, the 1450mm hot and cold annealing and pickling lines with an inline four-stand tandem mill were put into trial production. The production lines are powered by advanced facility and technology and became the first fully automated end-to-end production system in private cold rolled stainless steel industry in China.

In January 2021, the second phase was put into production with hot and cold annealing and pickling line and the project of cold rolled stainless steel sheet.

In order to achieve the goal of being a smart factory and an "unmanned" operation, Yangjiang Hongwang strive to build the project into a highly modernized stainless steel manufacturing base and a demonstration of intelligent manufacturing site. We established a strategic partnership with upstream supplier Guangqing group to achieve effective integration of production-supply-marketing resources.



HUNAN HONGWANG

Based in central southern regions of China, Hunan Hongwang is the first high-grade electrical steel project of Hongwang Group. With the establishment of a long-term strategic partnership with upstream suppliers, Hunan Hongwang is set with an annual capacity of 960,000 tons of CGO, HiB and high-quality non-oriented electrical steel. The entire factory is designed and constructed under the standards of the Lighthouse Factory, following the low-carbon and green principles to carry out high-quality and high-performance products fit to the needs of customers.

The company strives to build an intelligent industrial park of electrical steel and non-metallic materials in central Hunan and form an industrial cluster of technological research and development, intensive processing, trade and logistics, inspection and testing. Hunan Hongwang will be increasingly focused on offering value-added products and service that radiate the central region.



SICHUAN HONGWANG

Sichuan Hongwang is an important strategic layout in the Southwest region. It adopts advanced production equipment and the complete set of surface finishing facilities. Equipment includes single mill, annealing and pickling, bright annealing, tension leveler, split and cutting, brushed, 8K, Ti-Black, Ti-Gold, AFP stoving varnish and etc.

The company's annual output reached 150,000 tons of cold rolled stainless steel surface finishing coils and sheets and it has a complete stainless steel production-supply-marketing system for effective integration of resources.



HENAN HONGWANG

Located in central China, Henan Hongwang is a stainless steel base featured with surface finishing products. The production line contains CNC 1450 18-high mills, bright annealing, and all kinds of stainless steel sheet surface finishing equipment.

Relying on the regional layout advantages of the central plains economic zone, Henan Hongwang has become a leading cold rolled steel surface finishing manufacturing base in central China.



HONGWANG ELECTRICAL MACHINERY

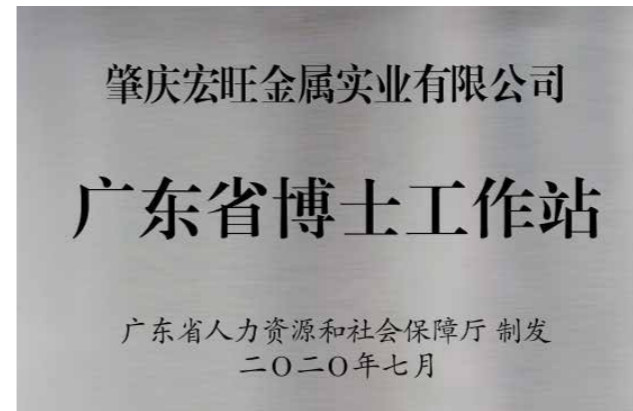
Hongwang Electrical Machinery is a professional manufacturer of highly efficient micro motors, asynchronous AC motors, IPM motors, as well as motor power chip controllers. The manufacturing base includes motor production lines powered by fully computerized production system, micro-motor inspection and testing laboratory, and an engineering technology center.

The pursuit for excellent product quality leads to certified qualification such as ISO9001 quality management system certification and national CCC certification. With the self-sufficient supply of Hongwang electrical steel, the company has a designed annual capacity of 60 million sets. Our products are widely used in smart home appliances, power tools, electrical vehicles, construction machinery equipment, smart transportation equipment and other fields.

TECHNOLOGY & INNOVATION

HWHG

SCIENTIFIC PROWESS



DOCTORAL RESEARCH CENTER

As an innovative platform for talent management services in Guangdong Province, Hongwang Doctoral Research Center was successfully approved to establish on July 24, 2020. Currently, there are more than 20 members in our research and development (R&D) team, mostly undergraduates, masters and PhDs, together with 3 professors of materials science from University of Science and Technology Beijing and South China University of Technology. With 1089m² R&D experimental area and 576 m² R&D office area, the Research Center is fully equipped with 385 sets of advanced laboratory equipment for design, experiment, testing and analysis, in a total value of more than CNY 46 million.

The Research Center successively set up numbers of laboratory of colored stainless steel, cold rolled stainless steel, chemical experiment and electrical steel. Carried out scientific projects such as recycling Ti-Black Chromium Trioxide, black steel automobile decoration strip and electrical steel research. Millions of economic benefits are generated every year. Being selected into the Xijiang Innovation Team and was approved for CNY 3 million provincial scientific research fund.

Since its inception, the Research Center obtained numbers of ISO certification of self-centering fixture, silicon dynamic reactive power compensation device, HDX smart thickness gauge, infrared thermometer smart probe, metallographic mosaic machine, acid tester, high temperature test chamber, UV accelerated aging test chamber, airflow salt spray test chamber, electrical steel magnetic performance testing system, electrical steel insulation resistance testing system, electrical steel lamination testing system, etc.

PRODUCTION FACILITIES

Three-Stand Tandem Mill

Width 1000-1300mm Thickness 0.5-3.0mm Speed 180m/min



Four-Stand Tandem Mill

Width 1000-300mm Thickness 0.5-3.0mm Speed 200m/min



Five-Stand Tandem Mill

Width 1000-550mm Thickness 0.28-3.0mm Speed 400m/min





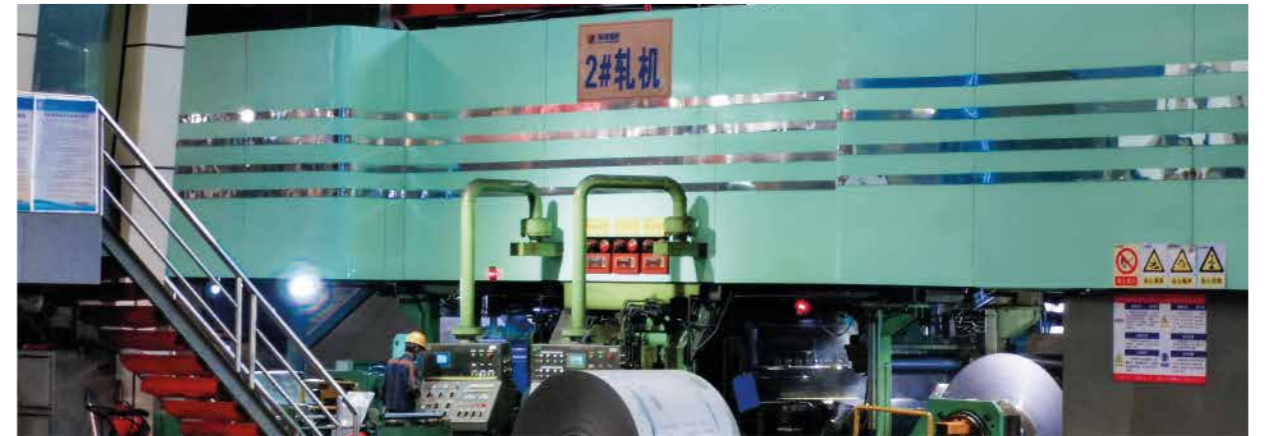
Six-Stand Tandem Mill

Width 420-820mm Thickness 0.25-2.0mm Speed 320m/min



20-High Rolling Mill

Width 1000-1300mm Thickness 0.2-2.0mm Speed 800m/min



2B Production Line

Width 510-1550mm Thickness 0.3-3.0mm Speed 200m/min



BA Production Line

Thickness 1000-1300mm Speed 0.21-2.0mm



Electrical Steel Production Line

Width 1000-1300mm Thickness 0.35-0.65mm Max. Speed 45m/min



Continuous Rolling & Annealing Mill

Width 1000-1300mm Thickness 0.5-3.0mm Max.TV 180m/min



Colored Stainless Steel Production Line



Coil

8K / Brushed / Hairline / PVD Coating (Ti-Gold, Rose Gold, etc.) / Ti-Black / AFP

Sheet

Single sheet continuous PVD coating / Split / Cutting / Brushed / Grinding
Hairline / Single furnace continuous PVD coating / Sandblasted / Embossed
Cross Hairline / Vibration



Shaded Pole Asynchronous Motor Automatic Assembly Line

Specification 60 Series 60-13, 60-15, 60-20, 60-25
speed Each Line 6000pcs/12H



Permanent Magnet Brushless DC Motor Automatic Assembly Line

Specification 38-20, 48-15, 50-25
speed Each Line 3000pcs/12H



PRODUCTS



Stainless Steel



Electrical steel



Motors

Stainless Steel Coil - Table of Parameters

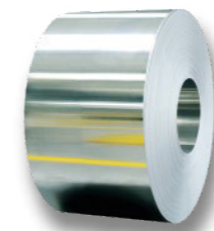
Product Type	Steel Property	Surface Finish	Grade	Thickness (mm)	Width (mm)					Application											
					Main dimension(mm)			Other dimension(mm)													
Coil	Hot Rolled	NO.1 NO.2E	200	NO.1: 2.2 ~ 6.0 NO.2E: 1.15 ~ 2.5	1000	1219	1240	1250	1500	Customizable	Chemical Industry Storage Tank										
			300																		
			400																		
	Cold Rolled	NO.2B		200	0.22 ~ 3.0	1000	1219	1240	1250	1500	Customizable	Medical Industry Food Industry Architectural Kitchenware Products									
				300																	
				400																	
				BA										200	0.2 ~ 2.0	1000	1219	1240	1250	1500	Customizable
														300							
														400							
		NO.4		200	0.22 ~ 3.0	1000	1219	1240	1250	1500	Customizable										
				300																	
				400																	
				Hairline										200	0.22 ~ 3.0	1000	1219	1240	1250	1500	Customizable
														300							
														400							
		Mirror		200	0.22 ~ 3.0	1000	1219	1240	1250	1500	Customizable		Surface Decoration Material								
				300																	
				400																	



STAINLESS STEEL COIL

BRIGHT ANNEALED

Specification



BA

Finish	BA
Grade	200/300/400
Standard	QB/GB/ASTM/JIS/EN
Thickness(mm)	0.2 ~ 2.0
Width(mm)	1000/1219/1240/1250/1500 Customizable
Inner Diameter(mm)	508、610
Coil Weight(mt)	Customizable
Edge State	Mill edge/Slit edge
Application	Medical Industry, Food Industry Kitchenware, Architectural Kitchenware Products

SURFACE FINISHED

Specification



NO.4

Finish	NO.4
Grade	200/300/400
Standard	QB/GB/ASTM/JIS/EN
Thickness(mm)	0.22 ~ 3.0
Width(mm)	1000/1219/1240/1250/1500 Customizable
Inner Diameter(mm)	508、610
Coil Weight(mt)	Customizable
Edge State	Mill edge/Slit edge
Application	Medical Industry, Food Industry Kitchenware, Architectural Kitchenware Products

HOT ROLLED

Specification

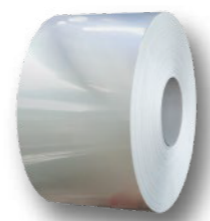


NO.1/NO.2E

Finish	NO.1/NO.2E
Grade	200/300/400
Standard	QB/GB/ASTM/JIS/EN
Thickness(mm)	NO.1: 2.2 ~ 6.0/NO.2E: 1.15 ~ 2.5
Width(mm)	1000/1219/1240/1250/1500 Customizable
Inner Diameter(mm)	508、610
Coil Weight(mt)	Customizable
Edge State	Mill edge/Slit edge
Application	Chemical Industry, Storage Tank

COLD ROLLED

Specification

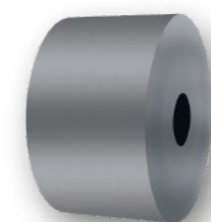


NO.2B

Finish	NO.2B
Grade	200/300/400
Standard	QB/GB/ASTM/JIS/EN
Thickness(mm)	0.22 ~ 3.0
Width(mm)	1000/1219/1240/1250/1500 Customizable
Inner Diameter(mm)	508、610
Coil Weight(mt)	Customizable
Edge State	Mill edge/Slit edge
Application	Medical Industry, Food Industry Kitchenware, Architectural Kitchenware Products

SURFACE FINISHED

Specification

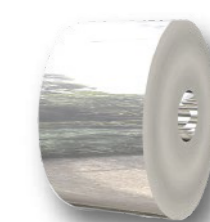


HL

Finish	HL
Grade	200/300/400
Standard	QB/GB/ASTM/JIS/EN
Thickness(mm)	0.22 ~ 3.0
Width(mm)	1000/1219/1240/1250/1500 Customizable
Inner Diameter(mm)	508、610
Coil Weight(mt)	Customizable
Edge State	Mill edge/Slit edge
Application	Medical Industry, Food Industry Kitchenware, Architectural Kitchenware Products

SURFACE FINISHED

Specification



6K, 8K

Finish	6K, 8K
Grade	200/300/400
Standard	QB/GB/ASTM/JIS/EN
Thickness(mm)	0.22 ~ 3.0
Width(mm)	1000/1219/1240/1250/1500 Customizable
Inner Diameter(mm)	508、610
Coil Weight(mt)	Customizable
Edge State	Mill edge/Slit edge
Application	Surface Decoration Material

Stainless Steel Sheet - Table of Parameters

Product Type	Steel Property	Surface Finish	Grade	Thickness(mm)	Width(mm)					Application											
					Main Dimension(mm)			Other Dimension(mm)													
Sheet	Hot Rolled	NO.1 NO.2E	200	NO.1: 2.2 ~ 6.0 NO.2E: 1.15 ~ 2.5	1000	1219	1240	1250	1500	Customizable	Chemical Industry Storage Tank										
			300																		
			400																		
	Cold Rolled	NO.2B		200	0.22 ~ 3.0	1000	1219	1240	1250	1500	Customizable	Medical Industry Food Industry Architectural Kitchenware Products									
				300																	
				400																	
				BA										200	0.2 ~ 2.0	1000	1219	1240	1250	1500	Customizable
														300							
														400							
		NO.4		200	0.22 ~ 3.0	1000	1219	1240	1250	1500	Customizable										
				300																	
				400																	
				Hairline										200	0.22 ~ 3.0	1000	1219	1240	1250	1500	Customizable
														300							
														400							
		Mirror		200	0.22 ~ 3.0	1000	1219	1240	1250	1500	Customizable		Surface Decoration Material								
				300																	
				400																	



BRIGHT ANNEALED

Specification



Finish	BA
Grade	200/300/400
Standard	QB/GB/ASTM/JIS/EN
Thickness(mm)	0.2 ~ 2.0
Width(mm)	1000/1219/1240/1250/1500 Customizable
Dimension(mm)	1219*2438/1219*3048/1000*2000 1219*3500/1219*4000/1500*3000 Customizable
Edge State	Mill edge/Slit edge
Application	Medical Industry, Food Industry Kitchenware, Architectural Kitchenware Products

SURFACE FINISHED

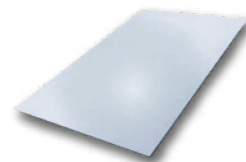
Specification



Finish	NO.4
Grade	200/300/400
Standard	QB/GB/ASTM/JIS/EN
Thickness(mm)	0.22 ~ 3.0
Width(mm)	1000/1219/1240/1250/1500 Customizable
Dimension(mm)	1219*2438/1219*3048/1000*2000 1219*3500/1219*4000/1500*3000 Customizable
Edge State	Mill edge/Slit edge
Application	Medical Industry, Food Industry Kitchenware, Architectural Kitchenware Products

HOT ROLLED

Specification



Finish	NO.1/NO.2E
Grade	200/300/400
Standard	QB/GB/ASTM/JIS/EN
Thickness(mm)	NO.1: 2.2~6.0/NO.2E: 1.15~2.5
Width(mm)	1000/1219/1240/1250/1500 Customizable
Dimension(mm)	1219*2438/1219*3048/1000*2000 1219*3500/1219*4000/1500*3000 Customizable
Edge State	Mill edge/Slit edge
Application	Chemical Industry Storage Tank

COLD ROLLED

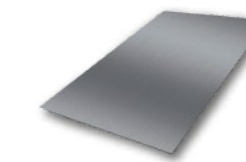
Specification



Finish	NO.2B
Grade	200/300/400
Standard	QB/GB/ASTM/JIS/EN
Thickness(mm)	0.22 ~ 3.0
Width(mm)	1000/1219/1240/1250/1500 Customizable
Dimension(mm)	1219*2438/1219*3048/1000*2000 1219*3500/1219*4000/1500*3000 Customizable
Edge State	Mill edge/Slit edge
Application	Medical Industry, Food Industry Kitchenware, Architectural Kitchenware Products

SURFACE FINISHED

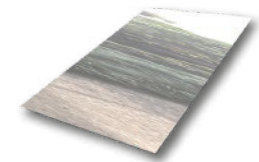
Specification



Finish	HL
Grade	200/300/400
Standard	QB/GB/ASTM/JIS/EN
Thickness(mm)	0.22 ~ 3.0
Width(mm)	1000/1219/1240/1250/1500mm Customizable
Dimension(mm)	1219*2438/1219*3048/1000*2000 1219*3500/1219*4000/1500*3000 Customizable
Edge State	Mill edge/Slit edge
Application	Medical Industry, Food Industry Kitchenware, Architectural Kitchenware Products

SURFACE FINISHED

Specification



Finish	6K, 8K
Grade	200/300/400
Standard	QB/GB/ASTM/JIS/EN
Thickness(mm)	0.22 ~ 3.0
Width(mm)	1000/1219/1240/1250/1500 Customizable
Dimension(mm)	1219*2438/1219*3048/1000*2000 1219*3500/1219*4000/1500*3000 Customizable
Edge State	Mill edge/Slit edge
Application	Surface Decoration Material

Colored Stainless Steel Coil - Table of Parameters

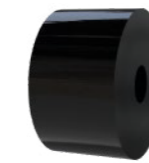
#	Grade	Product Type	Surface Finish	Standard	Series	Processing	Thickness (mm)	Width(mm)			Coil Weight (mt)	Edge State	
								Main dimension(mm)	Other dimension (mm)				
1	200 300 400	Coil	8K Mirror, 8K Fine Mirror	QB/GB/ASTM/JIS/EN	Chrome Series	Polishing and Grinding	0.28 ~ 1.45	1000	1219	1240	Customizable	Customizable	Mill edge /Slit edge
			No.4, Brushed, Hairline, Vibration Cross Hairline, Sandblasted				0.28 ~ 1.45						
2	200 300 400	Coil	Mirror, No.4, Brushed, Hairline, Vibration Cross Hairline, Sandblasted	QB/GB/ASTM/JIS/EN	Rose Gold Series	Physical Vapor Deposition	0.28 ~ 1.45	1000	1219	1240	Customizable	Customizable	Mill edge /Slit edge
3	200 300 400	Coil	Mirror, No.4, Brushed, Hairline, Vibration Cross Hairline, Sandblasted	QB/GB/ASTM/JIS/EN	Ti-Gold Series	Physical Vapor Deposition	0.28 ~ 1.45	1000	1219	1240	Customizable	Customizable	Mill edge /Slit edge
4	200 300 400	Coil	Mirror, No.4, Brushed, Hairline, Vibration, Cross Hairline, Sandblasted	QB/GB/ASTM/JIS/EN	Ti-Black Series	Electroplating	0.28 ~ 1.45	1000	1219	1240	Customizable	Customizable	Mill edge /Slit edge
5	200 300 400	Coil	Mirror, No.4, Brushed, Hairline, Vibration Cross Hairline, Sandblasted	QB/GB/ASTM/JIS/EN	Tawny Series	Physical Vapor Deposition	0.28 ~ 1.45	1000	1219	1240	Customizable	Customizable	Mill edge /Slit edge
6	200 300 400	Coil	Mirror, No.4, Brushed, Hairline, Vibration Cross Hairline, Sandblasted	QB/GB/ASTM/JIS/EN	Champagne Series	Physical Vapor Deposition	0.28 ~ 1.45	1000	1219	1240	Customizable	Customizable	Mill edge /Slit edge
7	200 300 400	Coil	Brushed Rose Gold, Brushed Champagne, No.4 Rose Gold, No.4 Ti-Gold, No.4 Ti-Black, Hairline Rose Gold, Hairline Ti-Gold, Hairline Ti-Black, Hairline Champagne, Vibration Rose Gold, Vibration Ti-Gold, Cross Hairline Rose Gold, Cross Hairline Ti-Gold, Sandblasted Rose-Gold, Sandblasted Ti-Gold	QB/GB/ASTM/JIS/EN	AFP Series	Roller Painting & Spraying	0.28 ~ 1.45	1000	1219	1240	Customizable	Customizable	Mill edge /Slit edge
8	200 300 400	Coil	Hairline Antique Copper, Hairline Antique Bronze Hairline Antique Brass	QB/GB/ASTM/JIS/EN	Antique Series	Antique		1000	1219	1240	Customizable	Customizable	Mill edge /Slit edge
9	200 300 400	Single plate	Mirror Rose Gold, No.4 Rose Gold, Hairline Rose Gold Mirror Rose Red, No.4 Rose Red, Hairline Rose Red	QB/GB/ASTM/JIS/EN	Single sheet continuous PVD Series	Physical Vapor Deposition	0.55 ~ 1.45	1000	1219	2438 3048 (length)	Customizable	Customizable	Mill edge /Slit edge



COLORED STAINLESS STEEL COIL

COLORED STAINLESS STEEL

Specification

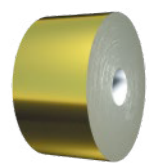


Ti-Black

Finish	Ti-Black
Grade	200/300/400
Standard	QB/GB/ASTM/JIS/EN
Thickness(mm)	0.28 ~ 1.45
Width(mm)	1000/1219/1240 Customizable
Inner Diameter(mm)	508、610
Coil Weight(mt)	Customizable
Edge State	Mill edge/Slit edge

COLORED STAINLESS STEEL

Specification

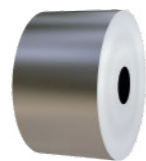


AFP

Finish	AFP
Grade	200/300/400
Standard	QB/GB/ASTM/JIS/EN
Thickness(mm)	0.28 ~ 1.45
Width(mm)	1000/1219/1240 Customizable
Inner Diameter(mm)	508、610
Coil Weight(mt)	Customizable
Edge State	Mill edge/Slit edge

SURFACE FINISHED

Specification



Brushed

Finish	Brushed
Grade	200/300/400
Standard	QB/GB/ASTM/JIS/EN
Thickness(mm)	0.28 ~ 1.45
Width(mm)	1000/1219/1240 Customizable
Inner Diameter(mm)	508、610
Coil Weight(mt)	Customizable
Edge State	Mill edge/Slit edge

SURFACE FINISHED

Specification

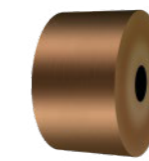


8K

Finish	8K
Grade	200/300/400
Standard	QB/GB/ASTM/JIS/EN
Thickness(mm)	0.28 ~ 1.45
Width(mm)	1000/1219/1240 Customizable
Inner Diameter(mm)	508、610
Coil Weight(mt)	Customizable
Edge State	Mill edge/Slit edge

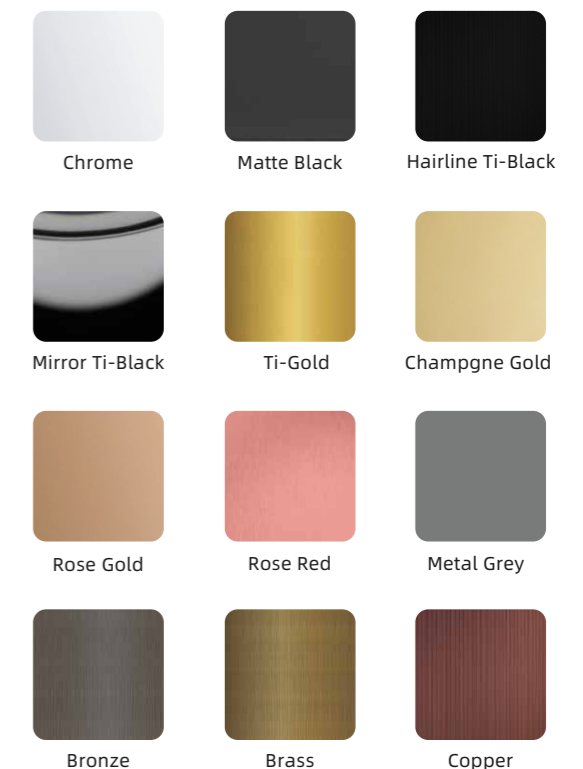
COLORED STAINLESS STEEL

Specification



PVD

Finish	PVD
Grade	200/300/400
Standard	QB/GB/ASTM/JIS/EN
Thickness(mm)	0.28 ~ 1.45
Width(mm)	1000/1219/1240 Customizable
Inner Diameter(mm)	508、610
Coil Weight(mt)	Customizable
Edge State	Mill edge/Slit edge



Colored Stainless Steel Sheet - Table of Parameters

#	Grade	Surface Finish	Color	Pattern	Thickness	Width(mm)				Length(mm)		
						Main Dimension			Other Dimension			
1	200	Mirror	Customizable	Customizable	0.3 ~ 3.0	1000	1219	1250	1500	Customizable	Max 6000 & Customizable	
	300											
	400											
2	200	Brushed Series	Customizable	Customizable	0.3 ~ 3.0	1000	1219	1250	1500	Customizable	Max 6000 & Customizable	
	300											Hairline
												Vibration
												No.4
400	Cross Hairline											
3	200	Etched	Customizable	Customizable	0.3 ~ 3.0	1000	1219	1250	1500	Customizable	Max 6000 & Customizable	
	300											
	400											
4	200	Embossed	Customizable	Customizable	0.3 ~ 3.0	1000	1219	1250	1500	Customizable	Max 6000 & Customizable	
	300											
	400											
5	200	Sandblasted	Customizable	Customizable	0.3 ~ 3.0	1000	1219	1250	1500	Customizable	Max 6000 & Customizable	
	300											
	400											
6	200	Stamped	Customizable	Customizable	0.3 ~ 3.0	1000	1219	1250	1500	Customizable	Max 6000 & Customizable	
	300											
	400											
7	200	Laminated	Customizable	Customizable	0.3 ~ 3.0	1000	1219	1250	1500	Customizable	Max 6000 & Customizable	
	300											
	400											
8	200	3D Laser	Customizable	Customizable	0.3 ~ 3.0	1000	1219	1250	1500	Customizable	Max 6000 & Customizable	
	300											
	400											
9	200	PVD	Customizable	Customizable	0.3 ~ 3.0	1000	1219	1250	1500	Customizable	Max 6000 & Customizable	
	300											
	400											
10	200	Antique	Customizable	Customizable	0.3 ~ 3.0	1000	1219	1250	1500	Customizable	Max 6000 & Customizable	
	300											
	400											
11	200	Anti-fingerprint	Customizable	Customizable	0.3 ~ 3.0	1000	1219	1250	1500	Customizable	Max 6000 & Customizable	
	300											
	400											

COLORED STAINLESS STEEL SHEET

Mirror Specification



Surface Finish	Mirror
Standard	QB/GB/ASTM/JIS/EN
Combination	Etched, 3D Laser, Sandblasted, Stamped, PVD, AFP
Grade	200/300/400
Thickness(mm)	0.3 ~ 3.0
Width(mm)	1000/1219/1250/1500 Customizable
Length(mm)	Max 6000 / Customizable
Dimension(mm)	1000*2000, 1219*2438 1219*3048, Customizable Max.width 1500
Color	Gold, Rose Gold, Black, Bronze, Copper, Blue Violet, Silver, Brass, Champagne, Rose Red
Pattern	Customizable
Packaging	Wooden Pallet or Customized Packaging

BRUSHED Specification



Surface Finish	Brushed
Standard	QB/GB/ASTM/JIS/EN
Combination	Hairline, No.4, Sandblasted, Etched, Stamped, PVD, AFP
Grade	200/300/400
Thickness(mm)	0.3 ~ 3.0
Width(mm)	1000/1219/1250/1500 Customizable
Length(mm)	Max 6000 / Customizable
Dimension(mm)	1000*2000, 1219*2438 1219*3048, Customizable Max.width 1500
Color	Gold, Rose Gold, Black, Bronze, Copper, Blue Violet, Silver, Brass, Champagne, Rose Red
Pattern	Customizable
Packaging	Wooden Pallet or Customized Packaging

ETCHED Specification



Surface Finish	Etched
Standard	QB/GB/ASTM/JIS/EN
Combination	8K Mirror, Brushed, Sandblasted, PVD
Grade	200/300/400
Thickness(mm)	0.3 ~ 3.0
Width(mm)	1000/1219/1250/1500 Customizable
Length(mm)	Max 6000 / Customizable
Dimension(mm)	1000*2000, 1219*2438 1219*3048, Customizable Max.width 1500
Color	Gold, Rose Gold, Black, Bronze, Copper, Blue Violet, Silver, Brass, Champagne, Rose Red
Pattern	Customizable
Packaging	Wooden Pallet or Customized Packaging

Embossed Specification



Surface Finish	Embossed
Standard	QB/GB/ASTM/JIS/EN
Combination	6K, 8K Mirror, Brushed, PVD
Grade	200/300/400
Thickness(mm)	0.3 ~ 3.0
Width(mm)	1000/1219/1250/1500 Customizable
Length(mm)	Max 6000 / Customizable
Dimension(mm)	1000*2000, 1219*2438 1219*3048, Customizable Max.width 1500
Color	Gold, Rose Gold, Black, Bronze, Copper, Blue Violet, Silver, Brass, Champagne, Rose Red
Pattern	Customizable
Packaging	Wooden Pallet or Customized Packaging

3D Laser Specification



Surface Finish	3D Laser
Standard	QB/GB/ASTM/JIS/EN
Combination	8K Mirror, Etched, PVD
Grade	200/300/400
Thickness(mm)	0.3 ~ 3.0
Width(mm)	1000/1219/1250/1500 Customizable
Length(mm)	Max 6000 / Customizable
Dimension(mm)	1000*2000, 1219*2438 1219*3048, Customizable Max.width 1500
Color	Gold, Rose Gold, Black, Bronze, Copper, Blue Violet, Silver, Brass, Champagne, Rose Red
Pattern	Customizable
Packaging	Wooden Pallet or Customized Packaging

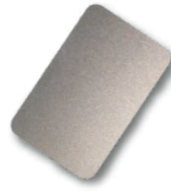
Laminated Specification



Surface Finish	Laminated
Standard	QB/GB/ASTM/JIS/EN
Combination	Brushed
Grade	200/300/400
Thickness(mm)	0.3 ~ 3.0
Width(mm)	1000/1219/1250/1500 Customizable
Length(mm)	Max 6000 / Customizable
Dimension(mm)	1000*2000, 1219*2438 1219*3048, Customizable Max.width 1500
Color	Gold, Rose Gold, Black, Bronze, Copper, Blue Violet, Silver, Brass, Champagne, Rose Red
Pattern	Customizable
Packaging	Wooden Pallet or Customized Packaging

SANDBLEASTED

Specification



Surface Finish	Sandblasted
Standard	QB/GB/ASTM/JIS/EN
Combination	8K Mirror, PVD, AFP
Grade	200/300/400
Thickness(mm)	0.3 ~ 3.0
Width(mm)	1000/1219/1250/1500 Customizable
Length(mm)	Max 6000 / Customizable
Dimension(mm)	1000*2000, 1219*2438 1219*3048, Customizable Max.width 1500
Color	Gold, Rose Gold, Black, Bronze, Copper, Blue Violet, Silver, Brass, Champagne, Rose Red
Pattern	Customizable
Packaging	Wooden Pallet or Customized Packaging

ANTIQUUE

Specification



Surface Finish	Antique
Standard	QB/GB/ASTM/JIS/EN
Combination	Brushed, Etched Embossed, PVD, AFP
Grade	200/300/400
Thickness(mm)	0.3 ~ 3.0
Width(mm)	1000/1219/1250/1500 Customizable
Length(mm)	Max 6000 / Customizable
Dimension(mm)	1000*2000, 1219*2438 1219*3048, Customizable Max.width 1500
Color	Gold, Rose Gold, Black, Bronze, Copper, Blue Violet, Silver, Brass, Champagne, Rose Red
Pattern	Customizable
Packaging	Wooden Pallet or Customized Packaging

Stamped

Specification



Surface Finish	Stamped
Standard	QB/GB/ASTM/JIS/EN
Combination	8K Mirror, Brushed, PVD
Grade	200/300/400
Thickness(mm)	0.3 ~ 3.0
Width(mm)	1000/1219/1250/1500 Customizable
Length(mm)	Max 6000 / Customizable
Dimension(mm)	1000*2000, 1219*2438 1219*3048, Customizable Max.width 1500
Color	Gold, Rose Gold, Black, Bronze, Copper, Blue Violet, Silver, Brass, Champagne, Rose Red
Pattern	Customizable
Packaging	Wooden Pallet or Customized Packaging

Anti-Fingerprint

Specification



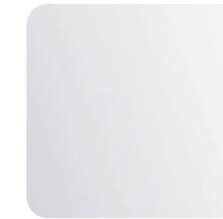
Surface Finish	Anti-fingerprint
Standard	QB/GB/ASTM/JIS/EN
Combination	8K Mirror, Brushed, Etched Embossed, Stamped, PVD
Grade	200/300/400
Thickness(mm)	0.3 ~ 3.0
Width(mm)	1000/1219/1250/1500 Customizable
Length(mm)	Max 6000 / Customizable
Dimension(mm)	1000*2000, 1219*2438 1219*3048, Customizable Max.width 1500
Color	Gold, Rose Gold, Black, Bronze, Copper, Blue Violet, Silver, Brass, Champagne, Rose Red
Pattern	Customizable
Packaging	Wooden Pallet or Customized Packaging

Physical Vapor Deposition

Specification



Surface Finish	PVD
Standard	QB/GB/ASTM/JIS/EN
Combination	8K Mirror, Brushed, Etched Embossed, Stamped, AFP
Grade	200/300/400
Thickness(mm)	0.3 ~ 3.0
Width(mm)	1000/1219/1250/1500 Customizable
Length(mm)	Max 6000 / Customizable
Dimension(mm)	1000*2000, 1219*2438 1219*3048, Customizable Max.width 1500
Color	Gold, Rose Gold, Black, Bronze, Copper, Blue Violet, Silver, Brass, Champagne, Rose Red
Pattern	Customizable
Packaging	Wooden Pallet or Customized Packaging



Chrome



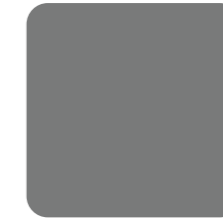
Ti-Gold



Champgne Gold



Rose Red



Mirror Metal Grey



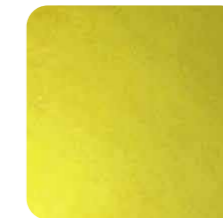
Bronze



Copper



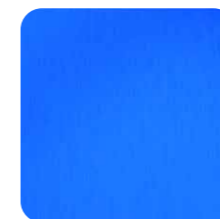
Obsidian Black



Lemon Yellow



Vibrant Orange



Sapphire Blue



Malachite Green



Pink



Sea Blue

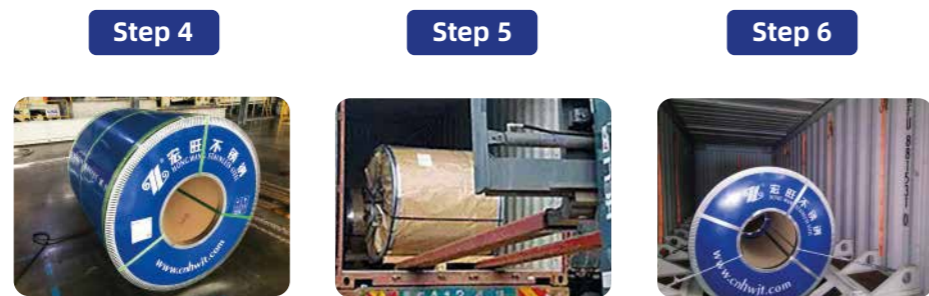
Packaging & Delivery

Stainless Steel Coil

Simple packaging:
Mainly uses plastic film or waterproof paper made of composite woven fabric to wrap the coil, and is secured with blue steel straps for bundling.



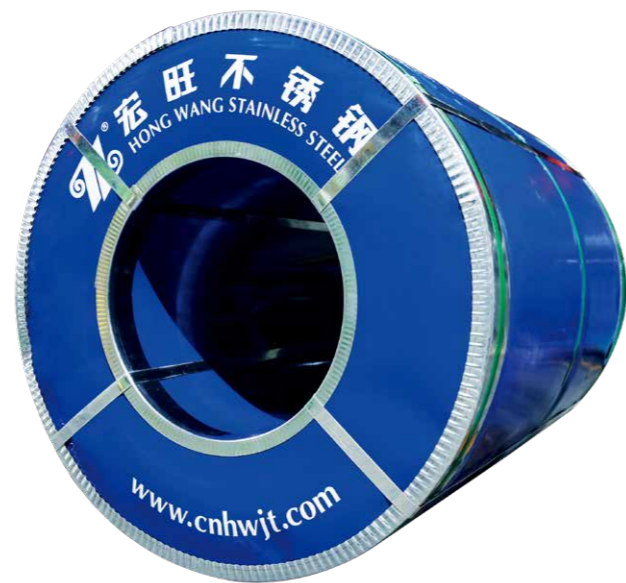
Suitable for NO.1 and NO.2E raw materials for short distance or domestic transportation.



Standard Packaging:

1. Composite woven fabric waterproof paper for full coverage wrapping.
2. Blue PE plastic board wrapping.
3. Steel corner protectors installed at both ends of the coil.
4. PET plastic steel for bundling and packaging.

Suitable for domestic transportation by trucks and ships.



Export Packaging:

1. Composite woven fabric waterproof paper for full coverage wrapping.
2. Blue PE plastic board wrapping.
3. Steel corner protectors installed at both ends of the steel coil.
4. Tied and bundled with blue steel straps.

Suitable for export shipping.

Stainless Steel Sheet



Standard Packaging:
Packaged in wooden or iron crates for simple packaging operations.

Suitable for short distance transportation in the surrounding areas.

Export Packaging:
Using wooden skids, VCI film, and wooden boards for packaging to provide better protection and to prevent water and moisture.

Suitable for long distance transportation and export transportation.

Antiseptic Inspection & JIS Certifications

Antiseptic Inspection Report (分析检测报告) and JIS Certification documents from Guangdong Detection Center of Microbiology (广东省微生物分析检测中心). The report includes sample details, test results, and a table of bacterial counts.

品名 (品名)	检测项目 (检测项目)	检测结果 (检测结果)	标准要求 (标准要求)
3.0-10 ⁴	菌落总数 (CFU/g)	99.7	≤99%
6.2-10 ⁴	菌落总数 (CFU/g)	99.5	≤99%
40	菌落总数 (CFU/g)	99.9	≤99%

ISO Certifications

Quality Management System Certification Certificate (质量管理体系认证证书) issued by CQC (China Quality Certification Center) to Jianqiang Metal Industry Co., Ltd. (肇庆宏旺金属实业有限公司). The certificate is for GB/T 19001-2016 / ISO 9001:2015.

Environmental Management System Certification Certificate (环境管理体系认证证书) issued by CQC (China Quality Certification Center) to Jianqiang Metal Industry Co., Ltd. (肇庆宏旺金属实业有限公司). The certificate is for GB/T 24001-2016 / ISO 14001:2015.

Japanese Industrial Standards (JIS) and Korean Standards Association (KSA) certification documents for Jianqiang Metal Industry Co., Ltd. (肇庆宏旺金属实业有限公司). The certificates are for JIS G 4305 (冷轧不锈钢板及钢带) and SUS304.

Quality Management System Certification Certificate (质量管理体系认证证书) issued by CQC (China Quality Certification Center) to Yangjiang Hongwang Metal Industry Co., Ltd. (阳江宏旺实业有限公司). The certificate is for GB/T 19001-2016 / ISO 9001:2015.

Environmental Management System Certification Certificate (环境管理体系认证证书) issued by CQC (China Quality Certification Center) to Yangjiang Hongwang Metal Industry Co., Ltd. (阳江宏旺实业有限公司). The certificate is for GB/T 24001-2016 / ISO 14001:2015.



HWHG

PRODUCT APPLICATION



Mosque

- Country : Canada
Material : AFP Etched No.4 Ti-Gold stainless steel sheet
Grade : 304
Application : Place of worship, landmark, climate resistance, scratch resistance, coating color uniformity and segment welding

Petronas Twin Towers

Country : Malaysia
Height : 451.9 meters
Floor Count : 88
Application : Stainless steel sheet
Grade : 316L



P R O D U C T A P P L I C A T I O N

Mount Emei Temple Roof Renovation

- Organization : Mount Emei Scenic Area Management Committee
Grade : 304
Dimension : AFP Brushed Ti-Black stainless steel sheet
0.65mm/0.75mm*1219mm*2438mm/3048mm/4000mm
Application : Stainless steel roof tile



Shopping Mall Decoration

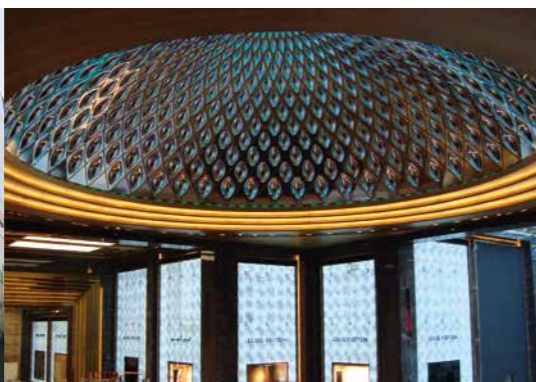
- Grade : 201/304
Dimension : All series of colored stainless steel sheet
0.38mm-0.98mm*1219mm*2438mm-4000mm
Application : Elevator door cover/Inner decoration



Fosun Foundation Shanghai



MIU MIU Beijing



The Avenues Mall Kuwait



BVLGARI Hong Kong



Taikoo Hui Guangzhou



CTF Finance Centre Guangzhou



HEYTEA

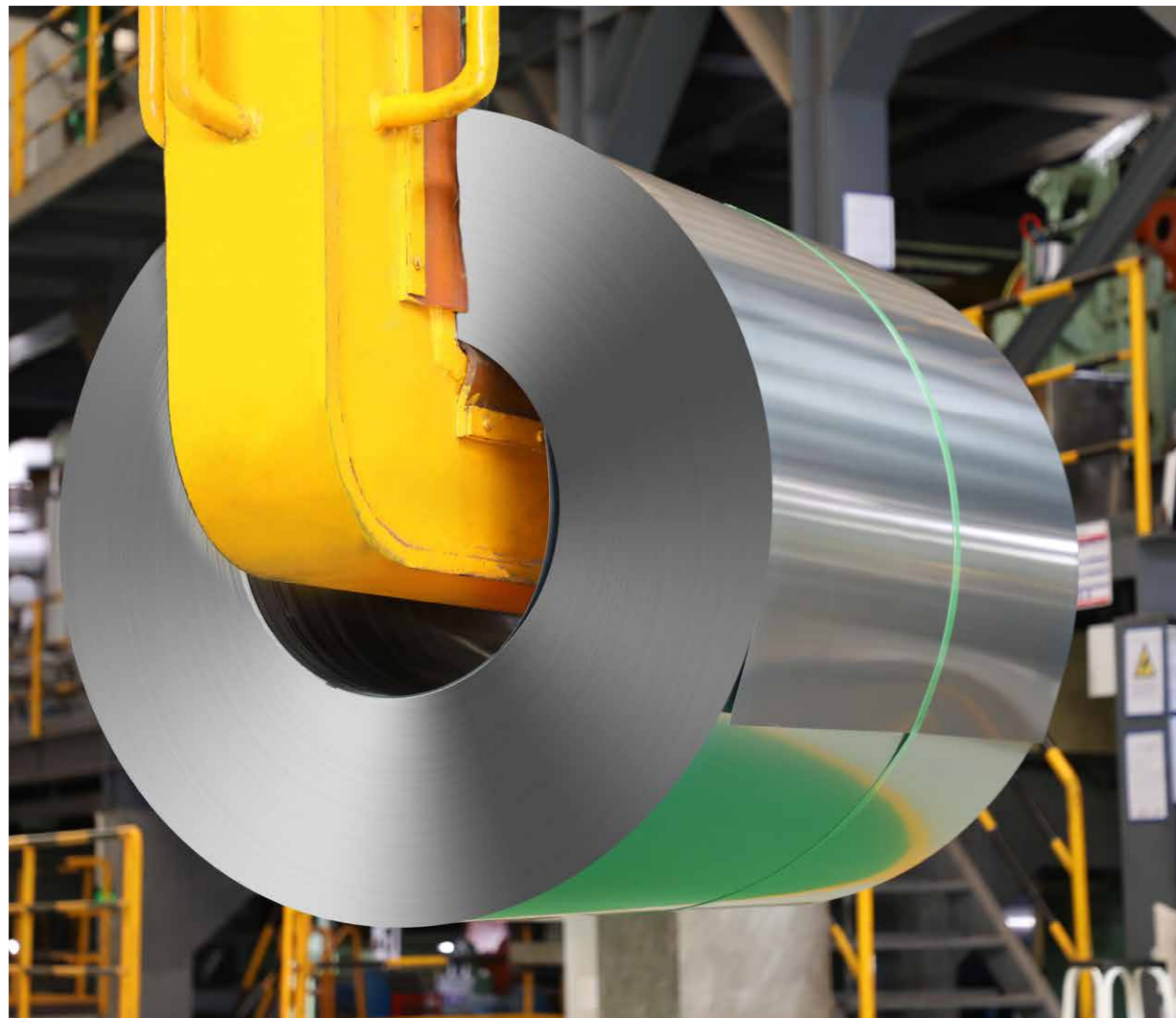


HWHG

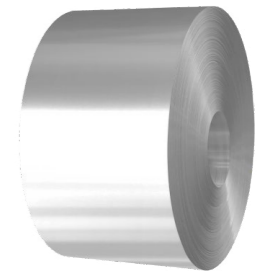
ELECTRICAL
STEEL

Electrical Steel

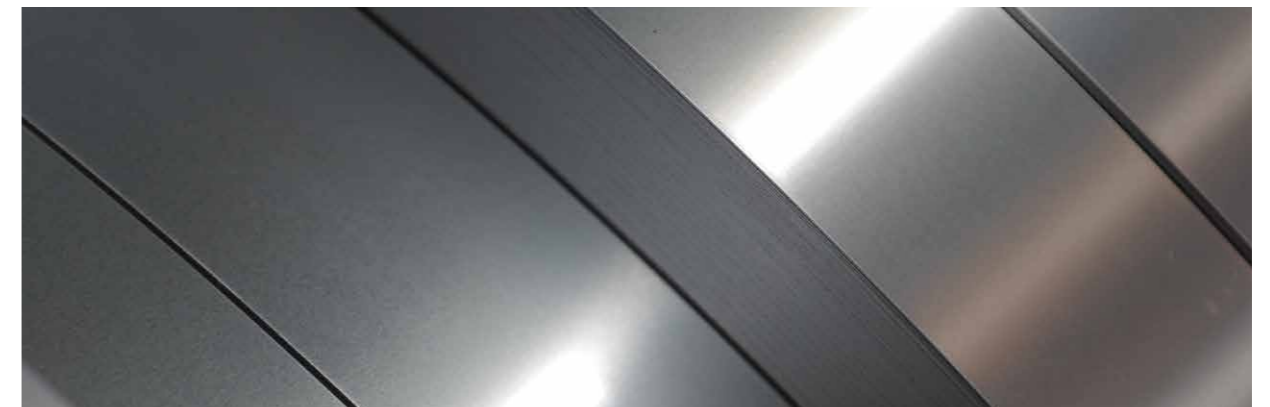
Cold rolled electrical steel is an essential soft magnetic material used as the core material for making various electrical appliances such as motors and transformers. Electrical steel is the most commonly used soft magnetic material and is widely used in the electrical power, electronics, and military industries. On one hand, it is closely related to people's production, life and other daily activities, on the other hand, it has also made great progress in adapting to the progress of the times.



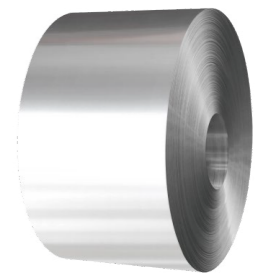
Grain Oriented Electrical Steel



Cold rolled grain-oriented electrical steel (GOES) is a soft magnetic material that produced using a cold rolling process. Its grain orientation inside the steel plate is consistent with the longitudinal direction (rolling direction) of the strip. The ideal micro-structure of GOES is $\{110\} \langle 001 \rangle$, meaning that magnetic properties should be different in each direction, with the best longitudinal performance. GOES is mainly used for production of various transformers and the transformers core is made of a stack of GOES lamination.



Non-Oriented Electrical Steel

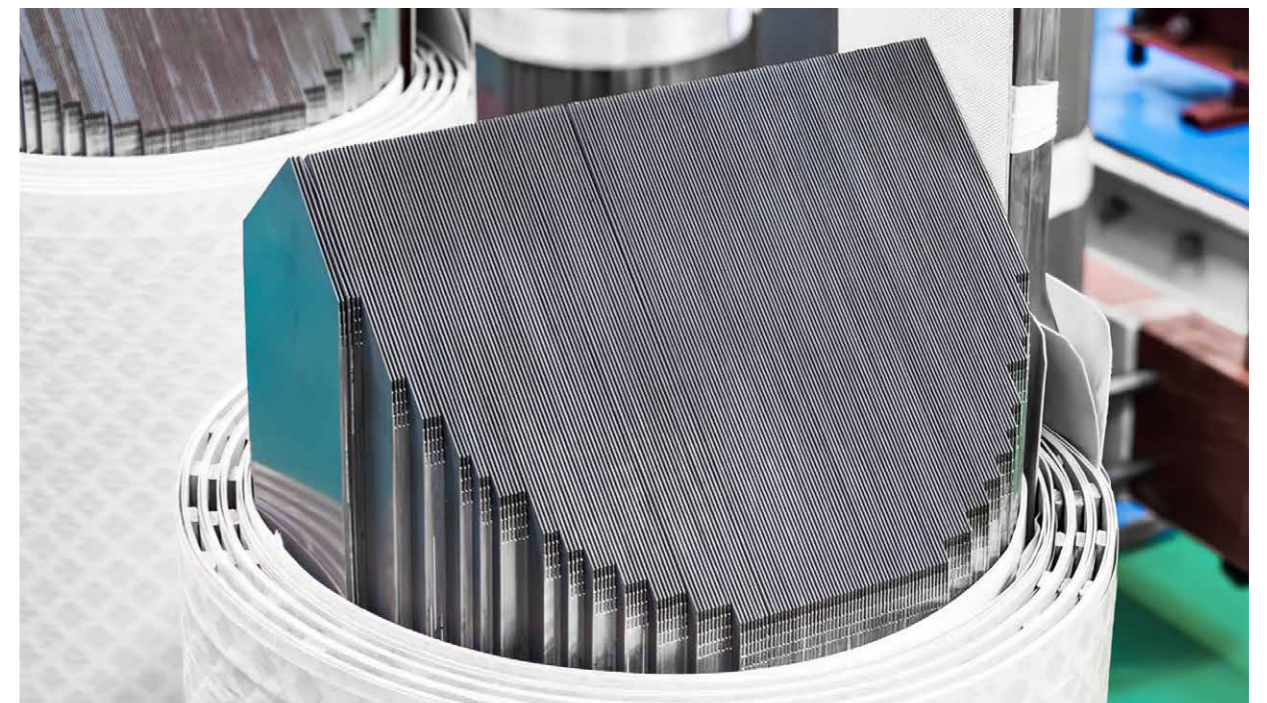


Cold rolled Non-Oriented electrical steel (NOES) is a soft magnetic material produced using a cold rolling process and it is designed to have uniform magnetic properties in all directions. High-grade NOES has the main features of low core loss, good thermal stability, high electrical resistance and etc. Commonly used in the construction large motors, generators, small and medium distribution transformers, magnetic amplifiers, measuring instrument transformers, electromagnetic switches and etc.

STANDARD VALUES FOR MAGNETIC PROPERTIES (GRAIN ORIENTED ELECTRICAL STEEL)

Magnetic and Technical Characteristics of Common Grain Oriented Electrical Steel Belt (Sheet)

Type	Grade	Nominal Thickness (mm)	Nominal Core Loss $P_{1.7/50}$ (W/kg)	Actual Core Loss $P_{1.7/50}$ (W/kg)	Magnetic Induction J800(T)	Min. Lamination Coefficient (%)	
CGO	H23Q110	0.23	1.10	1.08	1.85	0.955	
	H23Q120		1.20	1.15			
	H23Q130		1.30	1.20			
	H27Q110	0.27	1.10	1.08		0.960	
	H27Q120		1.20	1.15			
	H27Q130		1.30	1.20			
	H30Q120	0.3	1.20	1.15			0.965
	H30Q130		1.30	1.20			
	H35Q135	0.35	1.35	1.20			
	H35Q145		1.45	1.25			
	H35Q155		1.55	1.35			

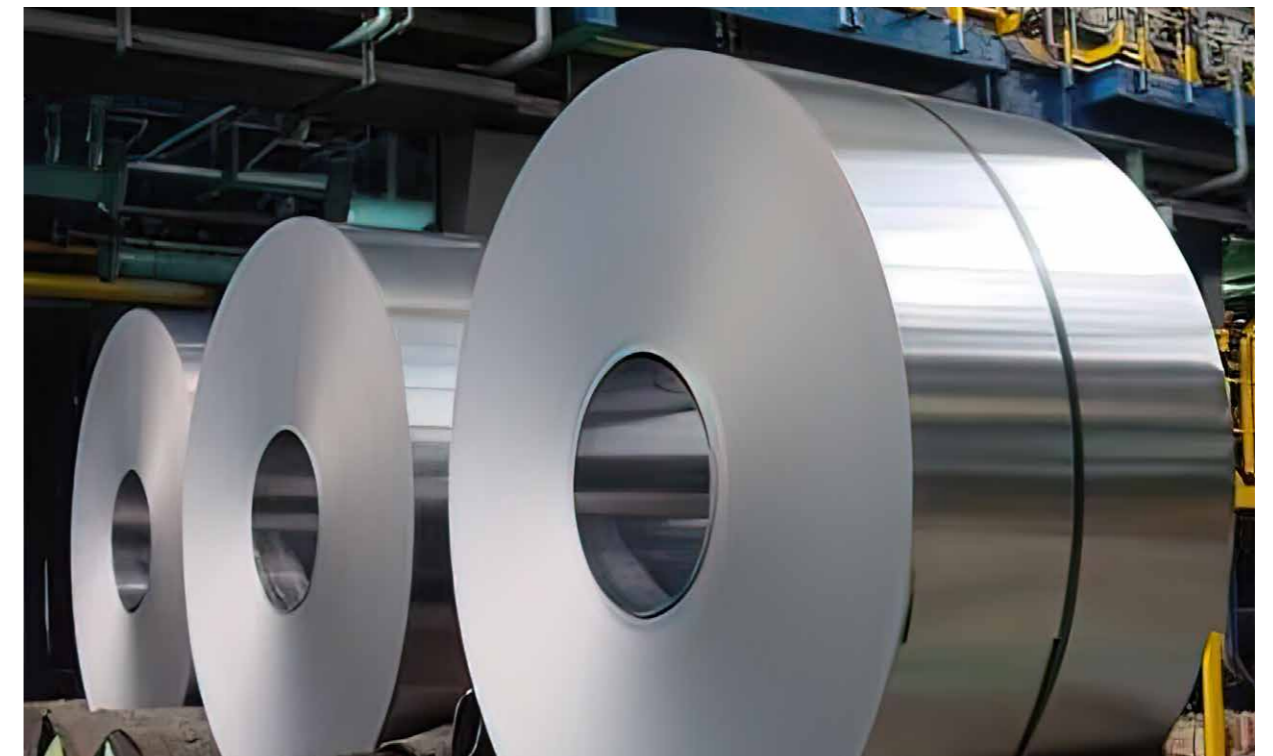
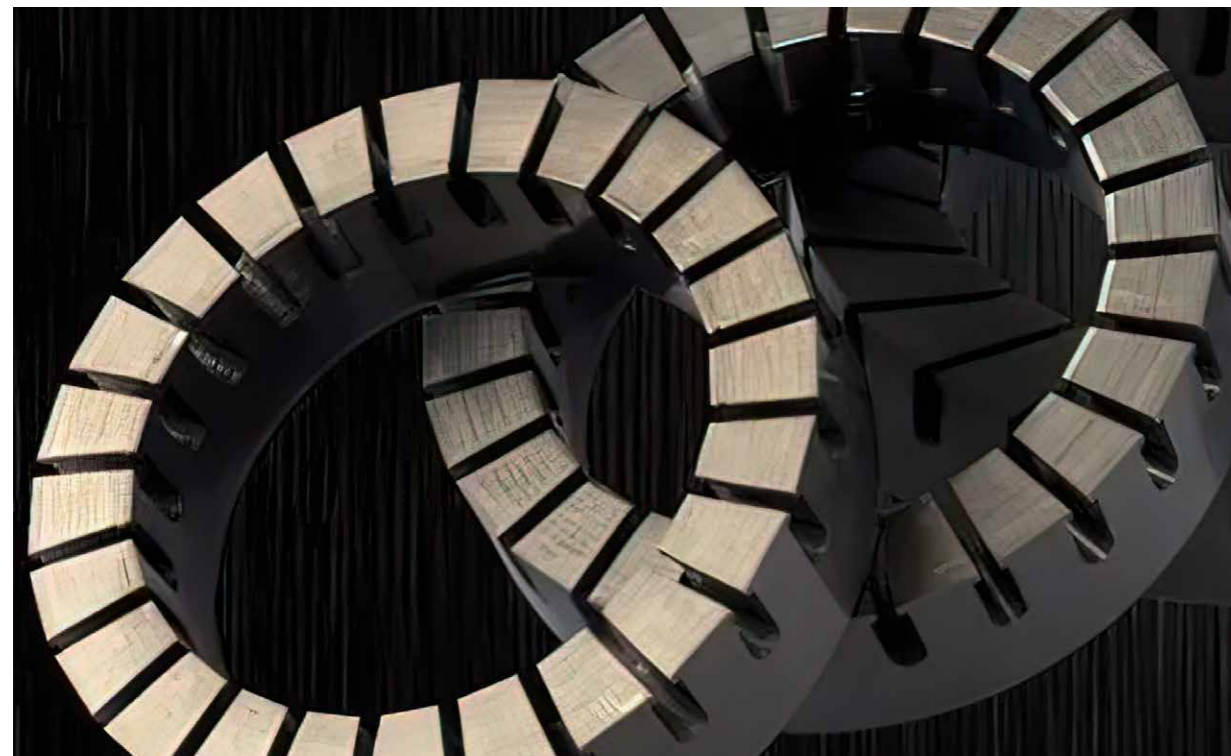


Magnetic Properties and Technical Characteristics of Domain Refinement CGO

Type	Grade	Nominal Thickness (mm)	Nominal Core Loss $P_{1.7/50}$ (W/kg)	Actual Core Loss $P_{1.7/50}$ (W/kg)	Magnetic Induction J800(T)	Min. Lamination Coefficient (%)
Domain Refinement CGO	H23QK100	0.23	1.00	0.96	1.85	0.955
	H23QK110		1.10	1.08		
	H23QK120		1.20	1.15		
	H23QK130	0.27	1.30	1.20		0.960
	H27QK100		1.00	0.96		
	H27QK105		1.05	1.00		
	H27QK110		1.10	1.08		
	H27QK120		1.20	1.15		
	H27QK130	0.3	1.30	1.20		0.965
	H30QK100		1.00	0.96		
	H30QK105		1.05	1.00		
	H30QK110		1.10	1.08		
	H30QK120		1.20	1.15		
	H30QK130		1.30	1.20		
	H35QK135	0.35	1.35	1.20		0.965
	H35QK145		1.45	1.25		
	H35QK155		1.55	1.35		

Magnetic Properties and Technical Characteristics of High Permeability Electrical Steel

Type	Grade	Nominal Thickness (mm)	Nominal Core Loss $P_{1.7/50}$ (W/kg)	Actual Core Loss $P_{1.7/50}$ (W/kg)	Magnetic Induction J800(T)	Min. Lamination Coefficient (%)
HiB	H18G080	0.18	0.80	0.79	1.89	0.950
	H18G085		0.85	0.83	1.89	
	H18G095		0.95	0.91	1.88	
	H20G080	0.2	0.80	0.80	1.90	0.955
	H20G085		0.85	0.84	1.89	
	H20G095		0.95	0.92	1.88	
	H23G085	0.23	0.85	0.85	1.90	0.96
	H23G090		0.90	0.88	1.89	
	H23G095		0.95	0.92	1.89	
	H23G100		1.00	0.96	1.88	
	H27G090	0.27	0.90	0.89	1.90	0.965
	H27G095		0.95	0.93	1.90	
	H27G100		1.00	0.96	1.90	
	H27G110		1.10	1.03	1.89	
	H27G120	0.3	1.20	1.10	1.88	0.965
	H30G105		1.05	1.01	1.90	
	H30G110		1.10	1.03	1.89	
	H30G120	0.35	1.20	1.10	1.88	0.965
	H35G115		1.15	1.12	1.89	
	H35G125		1.25	1.15	1.88	
H35G135			1.35	1.20	1.88	



Magnetic Properties and Technical Characteristics of Domain Refinement HiB

Type	Grade	Nominal Thickness (mm)	Nominal Core Loss $P_{1.7/50}$ (W/kg)	Actual Core Loss $P_{1.7/50}$ (W/kg)	Magnetic Induction J800(T)	Min. Lamination Coefficient (%)
Domain Refinement HiB	H20GK070	0.2	0.70	0.69	1.89	0.950
	H20GK075		0.75	0.74	1.88	
	H20GK080		0.80	0.78	1.88	
	H20GK085		0.85	0.82	1.88	
	H20GK090		0.90	0.88	1.88	
	H20GK095		0.95	0.92	1.88	
	H23GK080	0.23	0.80	0.79	1.88	0.955
	H23GK085		0.85	0.82	1.88	
	H23GK090		0.90	0.88	1.88	
	H23GK095		0.95	0.92	1.88	
	H23GK100		1.00	0.96	1.88	
	H27GK085	0.27	0.85	0.84	1.89	0.96
	H27GK090		0.90	0.87	1.89	
	H27GK095		0.95	0.92	1.88	
	H27GK100		1.00	0.96	1.88	
	H27GK105		1.05	1.00	1.88	
	H27GK110		1.10	1.03	1.88	
	H27GK120	1.20	1.10	1.88		
	H30GK095	0.3	0.95	0.92	1.89	0.965
	H30GK100		1.00	0.96	1.88	
H30GK105	1.05		1.00	1.88		
H30GK110	1.10		1.03	1.88		
H30GK120	1.20		1.10	1.88		



STANDARD VALUES FOR MAGNETIC PROPERTIES

(NON - ORIENTED ELECTRICAL STEEL)



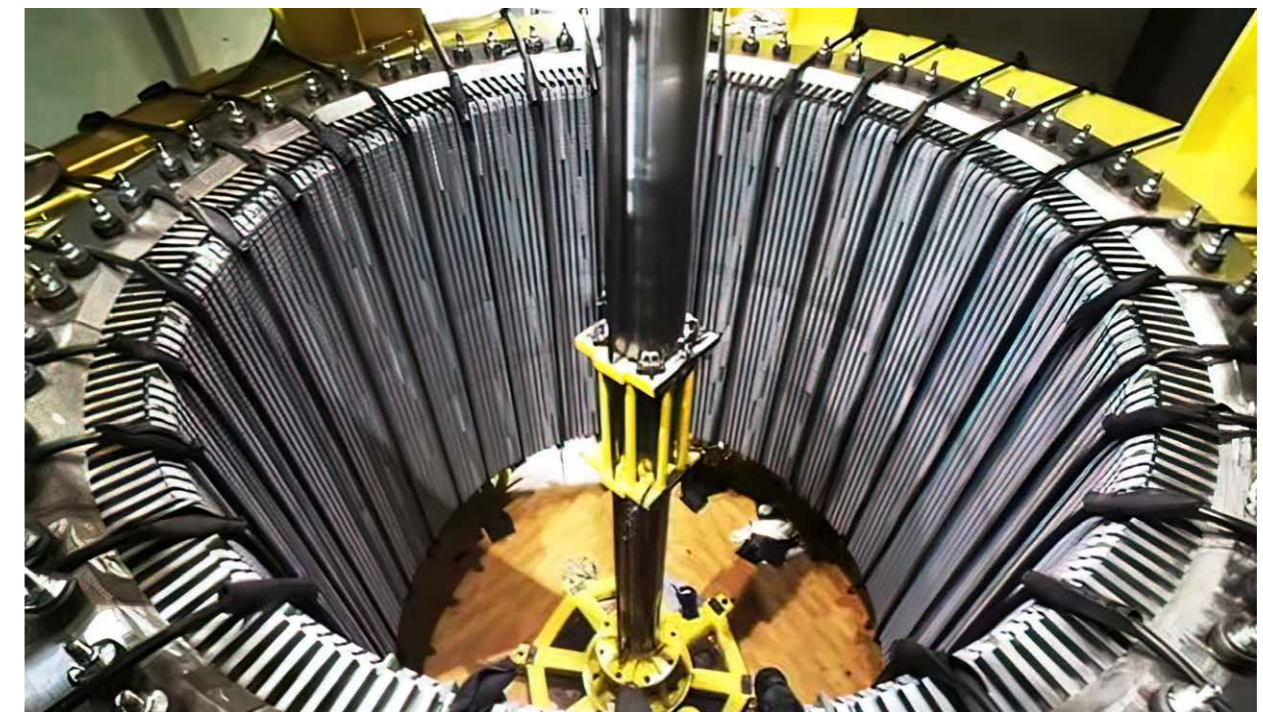
HWHG

Magnetic Properties and Technical Characteristics of Common Type Non-Oriented Electrical Steel

Type	Grade	Nominal Thickness (mm)	Max. Total Loss $P_{1.5/50}$ W/kg	Min. Magnetic Polarization J_{5000} T	Min. Lamination Coefficient (%)	Min. Number of Bending	Density kg/dm^3
Common Type	H35W230	0.35	2.10	1.62	0.95	2	7.60
	H35W250		2.28	1.64		2	7.60
	H35W270		2.45	1.64		2	7.60
	H35W300		2.65	1.64		2	7.65
	H35W360		3.20	1.65		3	7.65
	H35W440		3.40	1.67		3	7.70
	H50W250	0.50	2.30	1.64	0.97	2	7.60
	H50W270		2.48	1.64		2	7.60
	H50W290		2.65	1.64		2	7.60
	H50W310		2.85	1.64		2	7.60
	H50W350		3.00	1.65		2	7.65
	H50W400		3.20	1.65		5	7.65
	H50W470		3.30	1.70		10	7.70
	H50W600		4.20	1.68		10	7.75
	H50W700		4.70	1.70		10	7.80
	H50W800		5.50	1.71		10	7.80
	H50W1000		6.00	1.74		10	7.85
	H50W1300		7.00	1.74		10	7.85
	H65W310	0.65	3.05	1.64	0.97	2	7.60
	H65W350		3.45	1.65		2	7.60
	H65W400		3.95	1.66		2	7.65
	H65W470		4.60	1.67		5	7.65
	H65W530		5.20	1.68		10	7.70
	H65W600		5.90	1.68		10	7.75
	H65W700		6.90	1.69		10	7.75
	H65W800		7.90	1.71		10	7.80
	H65W1000		9.90	1.71		10	7.80
	H65W1300		12.90	1.72		10	7.85

Magnetic Properties and Technical Characteristics of High Efficiency Non-Oriented Electrical Steel

Type	Grade	Nominal Thickness (mm)	Max. Total Loss $P_{1.5/50}$ W/kg	Min. Magnetic Polarization J_{5000} T	Min. Lamination Coefficient (%)	Min. Number of Bending	Density kg/dm^3
High Efficiency	H35WG230	0.35	2.28	1.66	0.95	2	7.65
	H35WG250		2.45	1.67		2	7.65
	H35WG270		2.65	1.68		5	7.70
	H35WG300		2.80	1.69		5	7.70
	H50WG350	0.50	2.90	1.68	0.97	5	7.70
	H50WG470		3.00	1.71		5	7.70
	H50WG600		3.50	1.72		10	7.75
	H65WG600	0.65	4.50	1.72		10	7.75



Magnetic Properties and Technical Characteristics of Non-Oriented Electrical Steel for New Energy Vehicles

Type	Grade	Nominal Thickness (mm)	Max. Total Loss P _{1.5/50} W/kg	Min. Magnetic Polarization J ₅₀₀₀ T	Min. Lamination Coefficient (%)	Min. Number of Bending	Density kg/dm ³
Common Type	H20AV1200	0.20	12	1.61	0.93	2	7.60
	H20AV1300		13	1.63	0.93	2	7.65
	H25AV1300	0.25	13	1.62	0.94	2	7.60
	H27AV1400	0.27	14	1.62	0.94	2	7.60
	H30AV1500	0.30	15	1.63	0.94	2	7.60
	H35AV1700	0.35	17	1.64	0.95	2	7.60
	H35AV1800		18	1.64	0.95	2	7.60
	H35AV1900		19	1.65	0.95	2	7.65
	H35AV2000		20	1.65	0.95	3	7.65
	H35AV2100		21	1.66	0.95	3	7.65
High Magnetic Induction	H20AVG1200	0.20	12	1.68	0.93	2	7.65
	H25AVG1300	0.25	13	1.68	0.94	2	7.65
	H27AVG1400	0.27	14	1.68	0.94	2	7.65
	H30AVG1500	0.30	15	1.68	0.94	2	7.65
	H35AVG1700	0.35	17	1.68	0.95	2	7.65
	H35AVG1900		19	1.68	0.95	3	7.65
High Efficiency	H20AVX1200	0.20	12	1.64	0.93	2	7.65
	H20AVX1300		13	1.65	0.93	2	7.65
	H27AVX1400	0.27	14	1.65	0.94	2	7.65
	H30AVX1500	0.30	15	1.66	0.94	2	7.65
	H35AVX1700	0.35	17	1.66	0.95	2	7.65
	High Strength	H35AVQ500	0.35	25	1.64	0.95	2
H35AVQ550		32		1.63	0.95	2	7.60
H35AVQ600		35		1.6	0.95	2	7.60
High Efficiency & Strength	H25AVM1300	0.25	13	1.65	0.94	2	7.60
	H27AVM1400	0.27	14	1.65	0.94	2	7.60
	H30AVM1500	0.30	15	1.65	0.94	2	7.60

PRODUCT APPLICATION

Motor Stator and Rotor (Non-Oriented Electrical Steel)



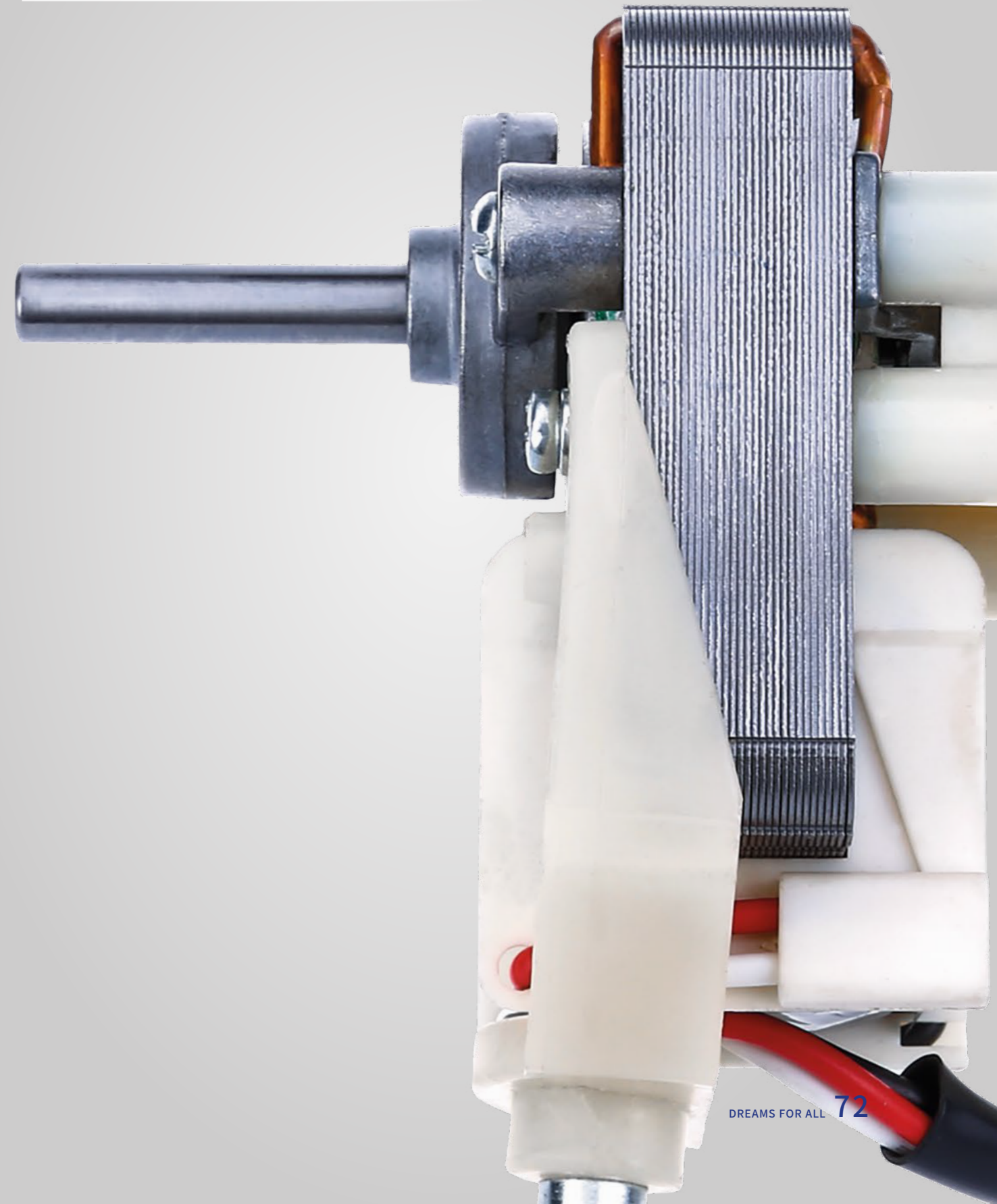
Industrial Motors
(Non-Oriented Electrical Steel)



Transformers
(Grain-Oriented Electrical Steel)

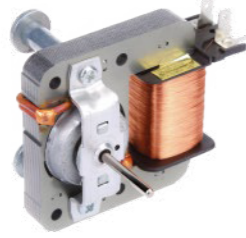


MOTOR SERIES



Shaded Pole Motor

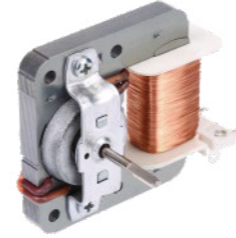
S60 Series



Asynchronous Motor

H (mm)	10-35
Current (A)	0.09-0.25
Power (W)	6-33
Speed (RPM)	2900
Voltage	100-240V
Frequency	50-60HZ
Rotation	CW&CCW
Insulation	Class E, B, F, H
Application	Air Fryers, Exhaust Fans Circulation Fans, Ovens Humidifiers, etc.

S61 Series



Asynchronous Motor

H (mm)	12-35
Current (A)	0.09-0.25
Power (W)	6-33
Speed (RPM)	2900
Voltage	100-240V
Frequency	50-60HZ
Rotation	CW&CCW
Insulation	Class E, B, F, H
Application	Air Fryers, Exhaust Fans, Ovens Humidifiers, Food Dehydrators Microwaves, etc.

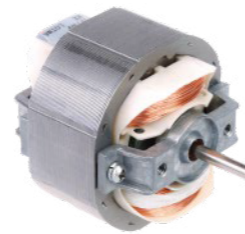
S48, S60 Series



Asynchronous Motor

H (mm)	10-35
Current (A)	0.09-0.25
Power (W)	6-33
Speed (RPM)	2900
Voltage	100-240V
Frequency	50-60HZ
Rotation	CW&CCW
Insulation	Class E, B, F, H
Application	Air Fryers, Exhaust Fans, Ovens Humidifiers, Fan Heaters, etc.

S58 Series



Asynchronous Motor

H (mm)	12-35
Current (A)	0.09-0.25
Power (W)	6-35
Speed (RPM)	2900
Voltage	100-240V
Frequency	50-60HZ
Rotation	CW&CCW
Insulation	Class E, B, F, H
Application	Circulation Fans, Exhaust Fans Ovens, Humidifiers Fan Heaters, etc.

Micro DC Motor

38 Series



DC Motor

H (mm)	20
Current (A)	1.2 / 1.4
Power (W)	34.6 / 40
Speed (RPM)	22000 / 23000
Application	Electric Water Guns Electric Chainsaws Electric Wrenches, etc.

48 Series



DC Motor

H (mm)	15
Current (A)	2.3
Power (W)	42
Speed (RPM)	21000
Application	Electric Water Guns Electric Chainsaws Electric Wrenches, etc.

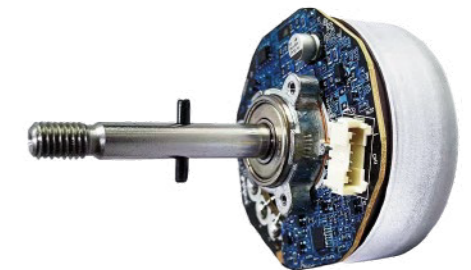
50 Series



DC Motor

H (mm)	25
Current (A)	3.4-4.0
Power (W)	55.4-63
Speed (RPM)	21000-25000
Application	Electric Chainsaws Electric Wrenches, etc.

External Rotor Series



DC Motor

Voltage (V)	DC5-24
Power (W)	5-36
Speed (RPM)	200-2600
Application	DC Fans, Air Purifiers Humidifiers, Ceiling Fans, etc.

Permanent Magnet Synchronous Motor



Trunk Lock Actuator Motor



Sunroof Motor

PRODUCT APPLICATION



Marketing Channels

Hongwang has established comprehensive marketing networks both domestically and internationally. Dedicated sales and customer service centers established in key stainless steel distribution centers in Foshan and Wuxi can facilitate prompt and close post-sales services to meet the demands of customers. With a focus on regional layout strategies, the group has developed close cooperative relationships with upstream and downstream partners, realizing integration across production, supply and sales. The flexible and precise nearby service system greatly reduces the logistics and capital costs for customers and enhances service efficiency.

Stainless Steel

Contact Us 400-689-0089

Wuxi Hongwang Stainless Steel Co., Ltd. (Eastern & Northern Region)

✉ wxhw@cnhwjt.com

📍 Room 2105-2108, Dongting Jingshi International Building A, Xishan District, Wuxi, Jiangsu

Foshan Hongwang Stainless Steel Co., Ltd. (Southern Region)

✉ fshw@cnhwjt.com

📍 20/F, 68 Fochan Rd, Shunde, Foshan, Guangdong

Chengdu Hongwang Stainless Steel Co., Ltd. (Western Region)

✉ cdhwsales@cnhwjt.com

📍 3/F, 258 Tubai Road, Building 9, Anjing Town Pidu District, Chengdu, Sichuan

Henan Hongwang Metal Material Co., Ltd. (Central Region)

✉ hnhwxz@cnhwjt.com

📍 Huangjin Ave, Dazhou Industrial Park Change, Henan

Guangdong Hongwang Metal New Material Co., Ltd. (International Sales)

✉ export@cnhwjt.com

📍 20/F, 68 Fochan Rd, Shunde, Foshan, Guangdong

Electrical Steel

Contact Us 400-689-0089

Wuxi Hongwang Stainless Steel Co., Ltd. (Eastern & Northern Region)

✉ wxhw@cnhwjt.com

📍 Room 2105-2108, Dongting Jingshi International Building A, Xishan District, Wuxi, Jiangsu

Foshan Hongwang Stainless Steel Co., Ltd. (Southern Region)

✉ fshw@cnhwjt.com

📍 20/F, 68 Fochan Rd, Shunde, Foshan, Guangdong

Hunan Hongwang New Material Technology Co., Ltd. (Central Region, After-Sales)

✉ hunanhw@cnhwjt.com

📍 1868 Lianbingxi St, Louxing District, Loudi, Hunan, China

Chengdu Hongwang Stainless Steel Co., Ltd. (Western Region)

✉ cdhwsales@cnhwjt.com

📍 3/F, 258 Tubai Road, Building 9, Anjing Town Pidu District, Chengdu, Sichuan

After-sales Support 0738-8812663

Motors

Hongwang Electrical Machinery Co., Ltd.

☎ 0758-6626609

✉ hwjdsales@cnhwjt.com

📍 Zhaoqing High Technology Industry Development Zone, Guangdong